

CONNECTIVITY OF CHAMBER GRAPHS OF BUILDINGS AND RELATED COMPLEXES

ANDERS BJÖRNER AND KATHRIN VORWERK

ABSTRACT. Let Δ be a finite building (or, more generally, a thick spherical and locally finite building). The chamber graph $G(\Delta)$, whose edges are the pairs of adjacent chambers in Δ , is known to be q -regular for a certain number $q = q(\Delta)$. Our main result is that $G(\Delta)$ is q -connected in the sense of graph theory.

Similar results are proved for the chamber graphs of Coxeter complexes and for order complexes of geometric lattices.

1. INTRODUCTION

Buildings were introduced by Tits [9] for the purpose of creating a unified class of geometric objects upon which groups of Lie type act, and from which such groups arise as automorphism groups. This highly successful project has led to a rich and elaborate theory, interweaving group theory, geometry and combinatorics, see [1], [5], [6], [9].

From a purely combinatorial point of view, buildings can be defined and characterized in two ways. First, they are highly symmetric *simplicial complexes*. They arise by gluing together Coxeter complexes in a very symmetric way and can be interpreted as q -analogues of Coxeter complexes. The maximal simplices are called *chambers* and the embedded Coxeter complexes are called *apartments*. This is the original point of view of Tits [9].

Second, focussing on the chambers and their adjacency relation as the primitive objects of the theory, buildings can be characterized as a class of *chamber systems*. This means that one looks at the structure of the chamber graph, whose edges are the pairs of adjacent chambers, embellished by certain labelling of these edges. The chamber system point of view was introduced by Tits in later work and is exposted e.g. in [5].

The axioms for the system of apartments indicate that a building is very tightly held together. It is therefore reasonable to expect also a high degree of connectivity of its chamber graph, as measured by the number of pairwise disjoint paths (or, galleries) that connect any pair of chambers. If at least q pairwise disjoint paths connect any pair

2000 *Mathematics Subject Classification*. 05E15; 05C40; 51E24.

Research supported by the Knut and Alice Wallenberg Foundation, grant KAW.2005.0098.

of chambers, then the chamber graph is said to be q -connected. The maximal such q is the degree of connectivity of the graph.

The main result of this paper is that the chamber graph $G(\Delta)$ of a finite (or, more generally, thick spherical and locally finite) building Δ is $q(\Delta)$ -connected in the sense of graph theory. Here $q(\Delta)$ denotes the number of chambers adjacent to any given chamber of Δ . Since more than $q(\Delta)$ independent paths cannot leave a chamber, it follows that the result is sharp, meaning that $q(\Delta)$ is the exact degree of connectivity of the chamber graph.

Coxeter complexes are closely related to buildings. They appear as apartments in buildings as well as in many other contexts. We show for a large class of $(d - 1)$ -dimensional Coxeter complexes that their chamber graph is d -connected. This class includes, for example, the complexes of the classical affine Coxeter groups. Our method is constructive and relies strongly on the group structure behind the Coxeter complexes.

The buildings and the Coxeter complexes of type A are, respectively, the order complexes of subspace lattices of finite-dimensional vector spaces over some field, and the Boolean lattices of subsets of some finite set. Both these types of lattices are examples of geometric lattices. In the last section we extend the study to chamber graphs of order complexes for general geometric lattices. Again, we can prove a lower bound on the connectivity of the graph of those complexes. However, in this case the graphs need not be regular anymore and the bound needs not be sharp.

2. PRELIMINARIES

2.1. Graph theory. We establish the graph-theoretic notions that are relevant for this paper. We follow the notation of [3] and refer to it for further details. In what follows, G denotes a simple graph with vertex set $V(G)$ and edge set $E(G)$. The graph G may be infinite, but we assume that the number of edges incident to a vertex is always finite.

For $A, B \subseteq V(G)$, an $A - B$ path is a path starting at a vertex in A and ending at a vertex in B such that no interior vertex of the path is in $A \cup B$. If $A = \{a\}$ and $B = \{b\}$, then we call such a path an $a - b$ path. Two $A - B$ paths are *disjoint* if the sets of their interior vertices are disjoint. The distance $d_G(u, v)$ between two vertices u and v of G is the minimal length of an $u - v$ path.

A graph G is called k -connected if $|V(G)| > k$ and G remains connected after removing fewer than k vertices and all incident edges. It is clear that in a k -connected graph every vertex is incident to at least k edges. A well-known theorem by Menger [3, Theorem 3.3.6], valid also for infinite graphs, states that a graph is k -connected if and only if it contains k disjoint $u - v$ paths for any two vertices $u, v \in V(G)$. This fact can be strengthened as follows.

Lemma 2.1 (Liu's criterion, [4]). *Let G be a connected graph and $|V(G)| > k$. If for any two vertices u and v of G with distance $d_G(u, v) = 2$ there are k disjoint u - v paths in G , then G is k -connected.*

For the proof, Liu in [4] refers to another paper to which we have not had access, so we supply a proof.

Proof of Lemma 2.1. Assume that G is not k -connected. By definition, there exists some $S \subset V(G)$ with $|S| < k$ such that $G - S$ is disconnected. Choose S minimal with respect to inclusion among all such sets. Then, there are two vertices u and v that lie in different components of $G - S$ and a $u - v$ path $P = (u = v_0, v_1, \dots, v_n = v)$ that contains exactly one element of S . If $P \cap S = \{v_i\}$ then v_{i-1} and v_{i+1} are also in different components of $G - S$ and thus there are at most $|S| \leq k - 1$ disjoint $v_{i-1} - v_{i+1}$ paths in G . But $d_G(v_{i-1}, v_{i+1}) = 2$, and we are done. \square

A graph G is called k -regular if every vertex $v \in V$ is contained in exactly k edges. A k -regular graph is obviously at most k -connected.

2.2. Chamber graphs of simplicial complexes. Let Δ be a pure d -dimensional simplicial complex. The d -dimensional faces of Δ are called *chambers* and the $(d - 1)$ -dimensional faces are called *walls*. The set of all chambers is denoted by $Ch(\Delta)$. Two chambers are called *adjacent* if they contain a common wall. The *chamber graph* of Δ is the graph $G(\Delta)$ with vertex set $Ch(\Delta)$ where two chambers of Δ are connected by an edge if they are adjacent. Paths in $G(\Delta)$ are sometimes called *galleries* in Δ . In the literature, chamber graphs have also been called dual graphs. This is to distinguish from the graph of a simplicial complex, by which is usually meant its 1-skeleton.

A pure d -dimensional simplicial complex Δ is said to be *balanced* if one can color the vertices of Δ with the colors $1, 2, \dots, d + 1$ so that in every chamber of Δ the $d + 1$ vertices are colored differently. Balanced simplicial complexes are a class of complexes with many interesting properties, see e.g. [7, Ch. III.4]. Instead of coloring the vertices of a balanced simplicial complex Δ , we can think of coloring the walls of Δ with $1, 2, \dots, d + 1$ so that for every chamber of Δ all its walls are colored differently. Here, the color of a wall is taken to be the one that none of its vertices is colored with. This induces an edge-coloring of the chamber graph of Δ .

Example 2.2. In later sections we prove k -connectivity for the chamber graphs of certain balanced simplicial complexes whose chamber graphs are k -regular. There is no such relationship between regularity and connectivity in general. Figure 2.1 shows a balanced 1-dimensional complex whose chamber graph is 6-regular but not even 5-connected, since it is disconnected by removing the 4 chambers connecting the walls A and B to the left substructure.

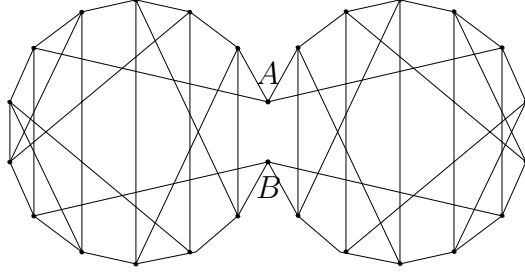


FIGURE 2.1. Balanced simplicial complex with 6-regular chamber graph that is not 5-connected

3. CHAMBER GRAPHS OF COXETER COMPLEXES

Let (W, S) be a Coxeter group with a finite set of generators S . The *Coxeter complex* $\Delta = \Delta(W, S)$ is by definition a simplicial complex on the vertex set $V = \cup_{s \in S} W/W_{(s)}$ of all left cosets of maximal standard parabolic subgroups $W_{(s)} = W_{S \setminus s}$ of W . Its chambers are all $C_w = \{wW_{(s)} : s \in S\}$ for $w \in W$.

We recall some basic facts about Δ , more details can be found in, for example, [1], [5], [6], [9]. $\Delta(W, S)$ is an $(|S| - 1)$ -dimensional balanced simplicial complex. The disjoint union $V = \cup_{s \in S} V_s$ partitions its vertex set into color classes $V_s = W/W_{(s)}$. The group W acts simply transitively on the chambers of Δ , which yields a bijection $w \mapsto C_w$ between W and $Ch(\Delta)$.

Two chambers C_w and $C_{w'}$ are adjacent if and only if $w' = ws$ for some $s \in S$. Thus, the chamber graph $G = G(\Delta)$ is isomorphic to the Cayley graph of W with respect to the generating set S . In particular, we can take W as vertex set of G and there is an edge between w and w' if and only if $w' = ws$ for some $s \in S$. It is clear that G is $|S|$ -regular.

Definition 3.1. *A Coxeter group (W, S) is said to be 2-finite, if for each pair $s, t \in S$ the element $st \in W$ is of finite order.*

Let (W, S) be 2-finite, and for each pair $s, t \in S$ denote by $P_{s,t}$ the path from s to t in G given by

$$P_{s,t} : s - st - sts - stst - \dots - tst - ts - t$$

The path exists due to the finite order of st , its length is $2k - 2$ if the order of st is k . Observe that if $\{s, t\} \neq \{s', t'\}$, then the paths $P_{s,t}$ and $P_{s',t'}$ are disjoint, except possibly at their endpoints.

Theorem 3.2. *Let (W, S) be a 2-finite Coxeter group, and let $\Delta = \Delta(W, S)$ be its Coxeter complex. Then the chamber graph $G = G(\Delta)$ is $|S|$ -connected.*

Proof. We use Liu's criterion (Lemma 2.1). Clearly, G has at least $|S| + 1$ vertices. Let w and w' be vertices with $d_G(w, w') = 2$ and let $w - w'' - w'$ be a path in G . Without loss of generality we may

assume that w'' is the identity element e , because the action of W is vertex-transitive. Then, $w = s$ and $w' = t$ for some $s, t \in S$.

Assume that $|S| = r$. We have the two $s - t$ paths $P_{s,t}$ and $s - e - t$. Furthermore, for every $s' \in S \setminus \{s, t\}$, we can concatenate the paths $P_{s,s'}$ and $P_{s',t}$ to get $r - 2$ more $s - t$ paths. It is clear by our above remark that this yields a family of r disjoint $s - t$ paths in G . \square

Remark 3.3. For the finite case the theorem can be proved also in the following way. Every finite Coxeter complex $\Delta = \Delta(W, S)$ is a triangulation of the $(|S| - 1)$ -sphere which can be realized as the boundary complex of some $|S|$ -dimensional simplicial polytope P_Δ . The chamber graph of Δ is therefore isomorphic to the graph consisting of the vertices and edges of the polytope that is dual to P_Δ . In [2], M. Balinski showed that the graph of any d -dimensional convex polytope is d -connected. Thus, it follows from these known facts that the chamber graph of every finite Coxeter complex Δ is $|S|$ -connected.

Our proof for the connectivity of chamber graphs of Coxeter complexes, which explicitly uses the Coxeter group structure of Δ , has two advantages: the argument is valid also for many infinite Coxeter complexes, including all affine groups (except \tilde{A}_1) and hyperbolic groups, and the construction reappears in a more general form for buildings in the next section.

Example 3.4. Let $W = \mathcal{S}_4$ be the symmetric group of all permutations on 4 elements, generated by the set $S = \{s_1, s_2, s_3\}$, where $s_i = (i, i + 1)$ denotes the adjacent transposition that exchanges the elements i and $i + 1$. Then (W, S) is a Coxeter group.

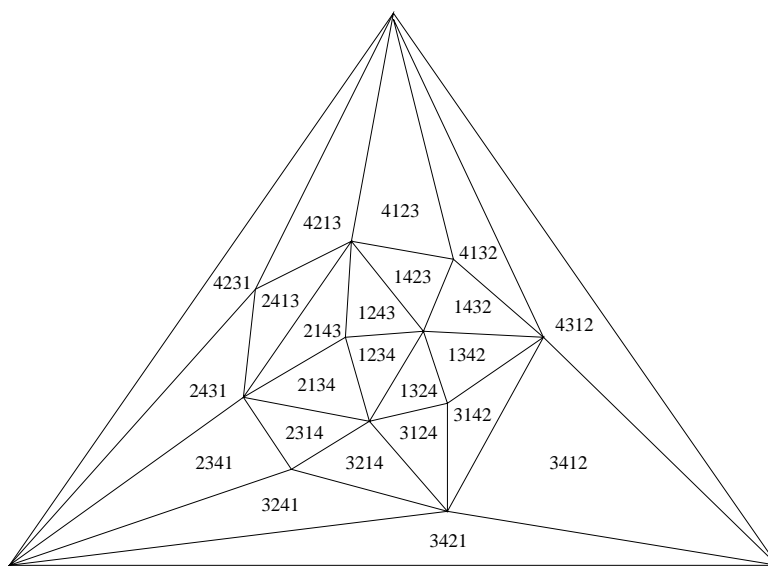


FIGURE 3.1. Schlegel diagram of the Coxeter complex of \mathcal{S}_4

The Coxeter complex Δ of (W, S) is the barycentric subdivision of the boundary of the 3-simplex, it triangulates the 2-sphere. Every chamber of Δ corresponds to a permutation in \mathcal{S}_4 . Figure 3.1 shows the Schlegel diagram of Δ where the complex is projected onto the chamber 4321. Every chamber has been labelled by its permutation written in one-line notation.

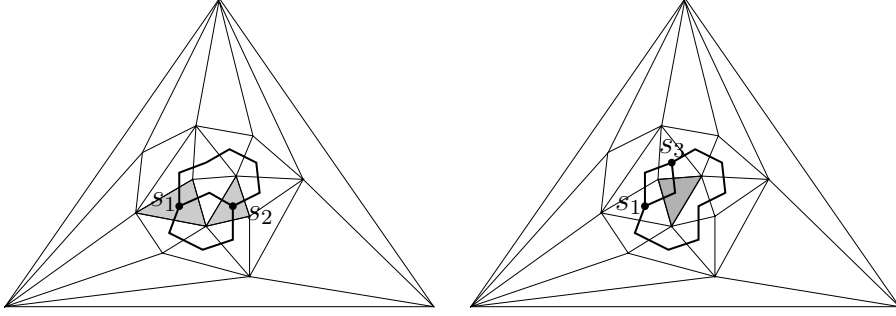


FIGURE 3.2. Three disjoint $s_1 - s_2$ resp. $s_1 - s_3$ paths

Consider the chambers $s_1 = 2134$, $s_2 = 1324$ and $s_3 = 1243$, which are all adjacent to the chamber $e = 1234$. As constructed in the proof of Theorem 3.2, the chamber graph of Δ contains the three disjoint $s_1 - s_2$ paths $s_1 - e - s_2$, P_{s_1, s_2} and $P_{s_1, s_3} \circ P_{s_3, s_2}$, and also the three disjoint $s_1 - s_3$ paths $s_1 - e - s_3$, P_{s_1, s_3} and $P_{s_1, s_2} \circ P_{s_2, s_3}$. The corresponding galleries in the Coxeter complex are indicated in Figure 3.2.

Remark 3.5. Note that the condition that the order of st is finite for all $s, t \in S$, required in Theorem 3.2, is necessary, as shown by the following example.

Let (W, S) be the infinite dihedral Coxeter group generated by $S = \{s, t\}$ such that the order of st is infinite. Then, the chamber graph G of the Coxeter complex Δ is an infinite path, and deleting any node from G disconnects the graph. In particular, G is not 2-connected.

4. CHAMBER GRAPHS OF SPHERICAL BUILDINGS

In this section we investigate the chamber graphs of buildings in order to determine their degree of connectivity.

Definition 4.1. A building is a simplicial complex Δ which is the union of a certain family of subcomplexes Σ , called apartments, satisfying the following axioms:

- (B0) Each apartment is a Coxeter complex.
- (B1) For any two simplices $A, B \in \Delta$, there is an apartment Σ containing both of them.
- (B2) If Σ and Σ' are two apartments containing A and B , then there is an isomorphism $\Sigma \rightarrow \Sigma'$ fixing A and B pointwise.

It is not easy, without some prior familiarity with the topic, to imagine the elaborate theory that emanates from these innocent-looking axioms. Explanations and details can be found in, for example, [1], [5], [6], and [9].

A direct consequence of axiom (B2) with $A = B = \emptyset$ and axiom (B0) is that all apartments of a building Δ are isomorphic to the Coxeter complex of some particular Coxeter group (W, S) . Buildings with a finite Coxeter group W are called *spherical*. If every wall is contained in finitely many chambers, then the building is said to be *locally finite*. In particular, all finite buildings are both spherical and locally finite. A building is called *thick* if every wall is contained in at least three chambers.

A building Δ is an $(|S|-1)$ -dimensional balanced simplicial complex: its vertex set V can be colored by the set S of generators of its Coxeter group. We want to emphasize another interpretation of balanced-ness, already mentioned in Section 2.2: We can associate a *type* $s \in S$ to every wall of Δ such that every chamber has exactly one wall of type s for every $s \in S$. For a chamber $C \in \text{Ch}(\Delta)$ and some $s \in S$, we denote by $N(C, s)$ the set of chambers D such that $D \cap C$ is a wall of type s .

Lemma 4.2 ([6, Theorem 5.2.10]). *Let Δ be a thick spherical and locally finite building. Then, there exist positive integers $(q_s)_{s \in S}$ such that every wall of type s is contained in exactly $q_s + 1$ chambers, or equivalently, such that $|N(C, s)| = q_s$ for every $C \in \text{Ch}(\Delta)$ and every $s \in S$.*

This implies that every thick spherical and locally finite building Δ has a q -regular chamber graph, where $q = q(\Delta) = \sum_{s \in S} q_s$.

Recall that a Coxeter group (W, S) is said to be 2-finite if st is of finite order for all $s, t \in S$. Being 2-finite implies existence of the paths $P_{s,t}$ in the chamber graph of the Coxeter complex of (W, S) , as was described in the previous section. We say that a building Δ is 2-finite if its Coxeter group (W, S) is. This includes all spherical buildings.

Now, let Δ be a 2-finite building and let Σ be an apartment of Δ . There is an isomorphism $\varphi : \Delta(W, S) \rightarrow \Sigma$, and because W acts transitively on $\text{Ch}(\Sigma)$ we can choose any chamber of Σ to be the image of the chamber $e \in W \cong \text{Ch}(\Delta(W, S))$. Assume that this chamber has been fixed. Then, for any $s, t \in S$, the path $P_{s,t}$ in the chamber graph of $\Delta(W, S)$ induces a path in the chamber graph of Σ and thus in the chamber graph of Δ . We denote this path by $P_{s,t}^\Sigma$.

A set Γ of chambers in a building is said to be *convex* if with each pair $C, D \in \Gamma$ every shortest path connecting C and D in the chamber graph is completely contained in Γ . Apartments are known to be convex.

Lemma 4.3. *Let Δ be a thick, spherical and locally finite building. Let B be a chamber of Δ , $C \in N(B, s)$ and $t \in S$. Then there is a family of q_t paths $(P_D)_{D \in N(B,t)}$ in $G = G(\Delta)$, where P_D is a $C - D$*

path not containing B for every $D \in N(B, t)$, and such that all paths are pairwise disjoint except at C .

Proof. We distinguish between three cases.

Case 1: $s = t$: This case is easy, since C is here adjacent to all chambers $D \in N(B, s) \setminus \{C\}$. Thus, the required paths are trivial, consisting of exactly one step from C to D for every $D \in N(B, s) \setminus \{C\}$, and the path from $C \in N(B, s)$ to itself of length 0. All paths are obviously disjoint except in C .

Case 2: $s \neq t$, and s and t commute. For every $D \in N(B, t)$, choose an apartment Σ_D containing C and D . Because Σ_D is convex, it contains B as well and we choose B as the image of $e \in W = \Delta(W, S)$ under the isomorphism between $\Delta(W, S)$ and Σ_D . Then, C is the image of s and D is the image of t in Σ_D and the path $P_{s,t}^{\Sigma_D}$ has length 2 and goes from C to D in G , avoiding B . Let E be the chamber corresponding to st in Σ_D , that is $P_{s,t}^{\Sigma_D}$ is the path $C - E - D$. Then, $E - D - B$ is a shortest path from E to B and thus D is contained in every apartment that contains B and E . But D is not contained in any apartment $\Sigma_{D'}$ for $D' \neq D$ because $\Sigma_{D'} \cap N(B, t) = \{D'\}$. Thus, E is not contained in any $\Sigma_{D'}$ for $D' \neq D$ and the path $P_{s,t}^{\Sigma_D}$ is disjoint from any other path $P_{s,t}^{\Sigma_{D'}}$ except in C .

Case 3: s and t do not commute. By Lemma 4.2, we have that $|N(B, t)| = |N(C, t)| = q_t$. Thus, we can match the elements of $N(B, t)$ with the elements of $N(C, t)$. For every matched pair $(E, D) \in N(C, t) \times N(B, t)$, we choose an apartment Σ_D containing E and D . Because $E - C - B - D$ is a shortest path from E to D and Σ_D is convex, it contains also C and B . We choose B as the image of $e \in W$ under the isomorphism between $\Delta(W, S)$ and Σ_D . Then, C, E and D are the images of s, st and t , respectively. The path $P_{s,t}^{\Sigma_D}$ goes from C via E to D , thus avoiding B . An argument analogous to case 2 shows that all paths $P_{s,t}^{\Sigma_D}$ are disjoint except in C .

In all three cases we get a path from C to D for every $D \in N(B, t)$, and all these paths are pairwise disjoint except in C . \square

Theorem 4.4. *Let Δ be a thick, spherical and locally finite building. Then its chamber graph $G = G(\Delta)$ is q -connected, where $q = q(\Delta)$.*

Proof. We use Liu's criterion, Lemma 2.1, to show that G is q -connected. Because G is q -regular, it has at least $q + 1$ vertices. Let C, D be two chambers of Δ with $d_G(C, D) = 2$ and let B be a chamber that is adjacent to both C and D . We need to construct q paths from C to D that are disjoint except at their endpoints.

Choose some $s \in S$. By Lemma 4.3, there are families of paths $(P'_E)_{E \in N(B, s)}$ and $(P''_E)_{E \in N(B, s)}$ such that P'_E goes from C to E and P''_E goes from D to E for every $E \in N(B, s)$. We join these paths pairwise for every E and get a family of paths $(P_E)_{E \in N(B, s)}$, where the path P_E

goes from C via E to D . This gives us q_s paths from C to D . Taking those families of paths for every $s \in S$, we get in total $q = \sum_{s \in S} q_s$ paths from C to D .

It remains to show that the constructed paths are pairwise disjoint except at their endpoints C and D . Assume that some chamber F is contained in two paths. Then $F \neq B$ by construction. Furthermore, F is not adjacent to B , because the chambers adjacent to B are by construction C or D or appear in exactly one path from C to D . F is the image of some $w \in W$ for every apartment Σ containing F and B . If B is chosen to be the image of $e \in W$ in all those apartments, then F is the image of some fixed $w \in W$ independently of the choice of Σ . This means that if F is contained in any path $P_{s,t}^\Sigma$, then w is contained in the dihedral subgroup of W generated by s and t . In particular, every path that contains F corresponds to the same two generators s and t . But then, F is contained in two paths either from C or from D to two chambers in $N(B, s)$ for some s . Those paths are disjoint except in C and D by Lemma 4.3. \square

Remark 4.5. The theorem is not valid for thick and locally finite buildings that are not spherical. As a counterexample we may choose the infinite ternary tree, a rank 2 building whose apartments are the embedded copies of doubly infinite paths. Here $q(\Delta) = 4$, but the chamber graph is not even 2-connected, since removal of any chamber disconnects the graph.

5. CHAMBER GRAPHS OF GEOMETRIC LATTICES

For basic definitions of partially ordered set theory, see [8]. Throughout the section, we will assume that P is a geometric lattice.

The *order complex* $\Delta(P)$ of P is the simplicial complex on vertex set P having its totally ordered subsets as simplices. The chambers of $\Delta(P)$ are the maximal chains of P . We are interested in the chamber graph of $\Delta(P)$ which we will denote by $G(P)$.

Because P is graded, $\Delta(P)$ is a balanced simplicial complex whose vertices can be labelled by their rank in P . Equivalently, the edges of $G(P)$ are labelled by the rank of the elements of P in which the two incident chambers differ.

Furthermore, P has a minimal element $\hat{0}$ and a maximal element $\hat{1}$. It is an easy observation that $\Delta(P)$ is a double cone over $\Delta(\bar{P})$ where $\bar{P} = P \setminus \{\hat{0}, \hat{1}\}$. Thus, the chamber graphs $G(P)$ and $G(\bar{P})$ are isomorphic. When we write $G(P)$, we will sometimes mean $G(\bar{P})$ but as the only difference is if the minimal and maximal element are included in the maximal chains, this should not cause any confusion.

Recall that the width of a poset is the maximal size of an antichain. The minimal width of all intervals of length two in P can be considered as *local width* of P . Define $q(P)$ to be that local width minus one.

Equivalently, $q(P)$ is the largest integer such that every open interval of length two in P contains at least $q(P) + 1$ elements.

If P is geometric then every open interval of length two contains at least 2 elements and thus $q(P) \geq 1$. The following Lemma shows that we only need to consider intervals with lower bound $\hat{0}$ in order to compute $q(P)$.

Lemma 5.1. *Let P be a geometric lattice, then the following holds.*

$$q(P) + 1 = \min \{ |(\hat{0}, x)| : r(x) = 2 \}$$

Proof. Let (x, y) be an open interval of length two, that is $r(y) = r(x) + 2$. Because P is geometric, we find atoms a and b such that $x \triangleleft x \vee a \triangleleft x \vee a \vee b = y$. We claim that (x, y) contains at least as many elements as $(\hat{0}, a \vee b)$. That would imply the Lemma.

For every $c \in (\hat{0}, a \vee b)$, the fact that P is a lattice and semi-modular ensures that $x \triangleleft x \vee c \triangleleft y$. Let $c, c' \in (\hat{0}, a \vee b)$ be such that $x \vee c = x \vee c'$. Then $x \vee (c \vee c') = x \vee c \triangleleft x \vee a \vee b = y$ which implies that $c \vee c' \triangleleft a \vee b$. But now, c, c' and $c \vee c'$ are atoms and we find that $c = c'$. This shows that the map $(\hat{0}, a \vee b) \rightarrow (x, y)$ that sends an atom c to $x \vee c$ is injective, and our claim follows. \square

Remark 5.2. Consider a finite building Δ whose Coxeter group is the symmetric group. Equivalently, Δ is the flag complex of some finite projective geometry [9, Theorem 6.3], that is Δ is the order complex of the modular and geometric lattice given by all non-trivial linear subspaces of that geometry, partially ordered by inclusion.

In particular, the Coxeter complex of the symmetric group S_n is the order complex of a geometric lattice of rank n , namely the Boolean lattice.

We are interested in the connectivity of the chamber graphs $G(P)$ of geometric lattices P .

Theorem 5.3. *Let P be a finite geometric lattice of rank n and let $q = q(P)$. Then, the chamber graph of P is $q(n - 1)$ -connected.*

Proof. Again, we use Liu's criterion. Clearly, $G(P)$ has at least $q(n - 1) + 1$ vertices. Let $C = (\hat{0} \triangleleft x_1 \triangleleft x_2 \triangleleft \dots \triangleleft x_{n-1} \triangleleft \hat{1})$ and $D = (\hat{0} \triangleleft y_1 \triangleleft y_2 \triangleleft \dots \triangleleft y_{n-1} \triangleleft \hat{1})$ be two chambers of $\Delta(P)$ at distance 2 in $G(P)$. This means that $x_i = y_i$ for all ranks i except two, say i_1 and i_2 where we assume that $i_1 < i_2$, and that the chamber adjacent to C through a wall of rank i_1 is also adjacent to D through a wall of rank i_2 . The latter plays a role only if $i_2 = i_1 + 1$ and can be satisfied by exchanging the roles of C and D if necessary.

For every rank $r = 1, \dots, n - 1$ we will construct q paths from C to D whose first edge is labeled by r , that is paths that first change the element of rank r in the maximal chain $\hat{0} \triangleleft x_1 \triangleleft x_2 \triangleleft \dots \triangleleft x_{n-1} \triangleleft \hat{1}$. For that, we will, without further mentioning, make extensive use of

the fact that every open interval of length two contains at least $q + 1$ elements.

Case 1: Assume that $|r - i_1| \geq 2$ and $|r - i_2| \geq 2$. Choose $z_1, \dots, z_q \in (x_{r-1}, x_{r+1})$ with $z_j \neq x_r$ for all $j = 1, \dots, q$. Then, for every j , there is a path from C to D whose edges are labelled with r, i_1, i_2 and r in that order. The path is shown in Figure 5.1, where we depicted the chambers as maximal chains and labeled the edges between the chambers. Note that the paths constructed for different j are disjoint except in their endpoints: each interior chamber in the j -th path contains the element z_j .

Case 2: Assume that $r = i_1 - 1$. Choose $z_1, \dots, z_q \in (x_{r-1}, x_{r+1})$ with $z_j \neq x_r$ for all j and $w_1, \dots, w_q \in (x_{r-1}, y_{r+1})$ with $w_j \neq x_r$ for all j . Then, $z_j \vee w_j$ covers z_j and w_j and is covered by x_{r+2} because P is semi-modular. For every j , there is a path from C to D with edges labeled with r, i_1, r, i_1, i_2 and r in that order, see Figure 5.2. Again, those q different paths are internally disjoint, because each interior chamber of the j -th path contains either z_j or w_j .

Case 3: Assume that $r = i_1 < i_2 - 1$. Let $z_1, \dots, z_q \in (x_{r-1}, x_{r+1})$, we can choose $z_1 = y_r$. For $j = 1$, we get a path of length 2 from C to D with edges labeled with r and i_2 . For every $j > 1$, we get a path from C to D with edges labeled with r, i_2, r as in Figure 5.3. As before, all q paths are internally disjoint.

Case 4: Assume that $r = i_1 = i_2 - 1$. Let $z_1, \dots, z_q \in (x_{r-1}, x_{r+1})$, we can choose $z_1 = y_r$. For $j = 1$, we get a path of length 2 from C to D with edges labeled with r and i_2 as in Case 3. For every $j > 1$, we get a path from C to D with edges labeled with r, i_2, r, i_2 as in Figure 5.4. Note that every interior chamber of the j -th path contains z_j or $z_j \vee y_r$ and that $z_j \vee y_r \neq z_{j'} \vee y_r$ for $j \neq j'$ because P is a lattice. This ensures that all q paths are internally disjoint.

Case 5: $i_1 + 1 = r = i_2 - 1$. Choose $z_1, \dots, z_q \in (x_{i_1}, x_{i_2})$ with $z_j \neq x_r$ for all j , $w_1, \dots, w_q \in (y_{i_1}, y_{i_2})$ with $w_j \neq x_r$ for all j and for every $j = 1, \dots, q$, choose $u_j \in (x_{i_1-1}, w_j)$ with $u_j \neq y_{i_1}$. Then for every j , we find a path from C to D as shown in Figure 5.5. Furthermore, the elements $u_j \vee x_{i_1}$ and $u_j \vee z$ are different for different j and the constructed q paths are internally disjoint.

Case 6: $r = i_2 = i_1 + 1$. Choose $w_1, \dots, w_q \in (x_{i_1-1}, y_{i_2})$ with $w_j \neq x_{i_1}$ for all j . For every j , we construct a path from C to D as in Figure 5.6. Every interior chamber of the j -th path contains w_j or $x_{i_1} \vee w_j$ and $w_j \vee x_{i_1} \neq w_{j'} \vee x_{i_1}$ for $j \neq j'$ because P is a lattice. Thus, all q paths are internally disjoint.

Cases 7–8–9: Assume that $r = i_1 + 1 < i_2 - 1$, or $i_1 + 1 < r = i_2 - 1$, or $r = i_2 + 1$. Then, by a construction similar to that used for Case 2 we can construct q paths from C to D that are disjoint except in their endpoints

Case 10: Assume that $r = i_2 > i_1 + 1$. Then, a construction similar to that used for Case 3 yields q paths from C to D that are disjoint except in their endpoints.

We invite the reader to check that every path from C to D that we constructed above and that starts with an edge labeled by r does not change any elements in the maximal chains except at the ranks i_1, i_2 and r . Furthermore, every maximal chain different from C and D contains some element at rank r, i_1 or i_2 that is not contained in any maximal chain of any other path. This shows that we have constructed a family of $q(n - 1)$ paths from C to D that are pairwise disjoint except in their endpoints. Liu's criterion implies that $G(P)$ is $q(n - 1)$ -connected. \square

Example 5.4. Recall that the Coxeter complex of the symmetric group S_4 is isomorphic to the order complex of the boolean lattice B_4 consisting of all subsets of $\{1, 2, 3, 4\}$. We have shown in Theorem 3.2 that the chamber graph of that complex is 3-connected. This result also follows from Theorem 5.3 because $q(B_4) = 1$. In fact, the construction in the proof of Theorem 5.3 yields exactly the same family of internally disjoint paths as in Example 3.4.

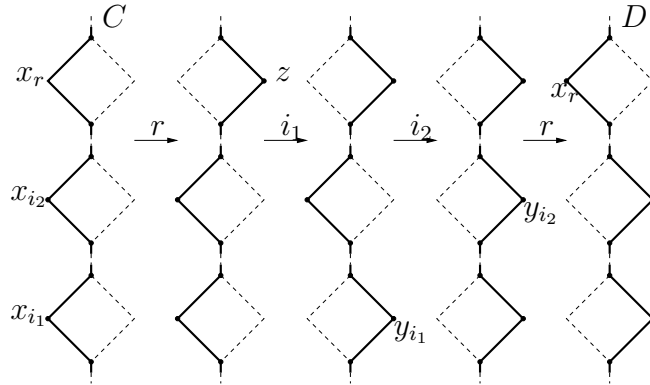


FIGURE 5.1. Path from C to D , Case 1

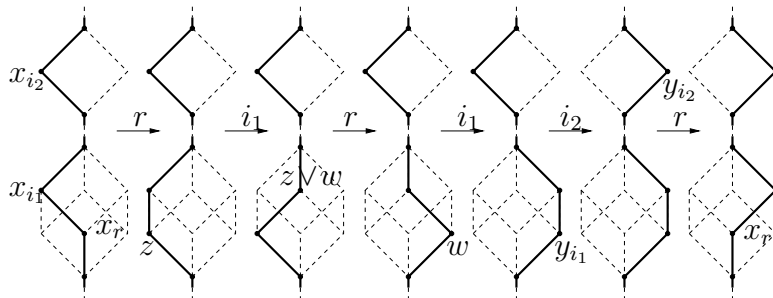


FIGURE 5.2. Path from C to D , Case 2

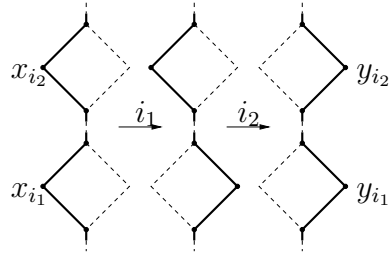


FIGURE 5.3. Path from C to D , Case 3

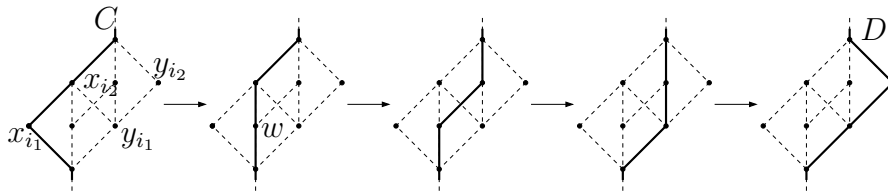


FIGURE 5.4. Path from C to D , Case 4

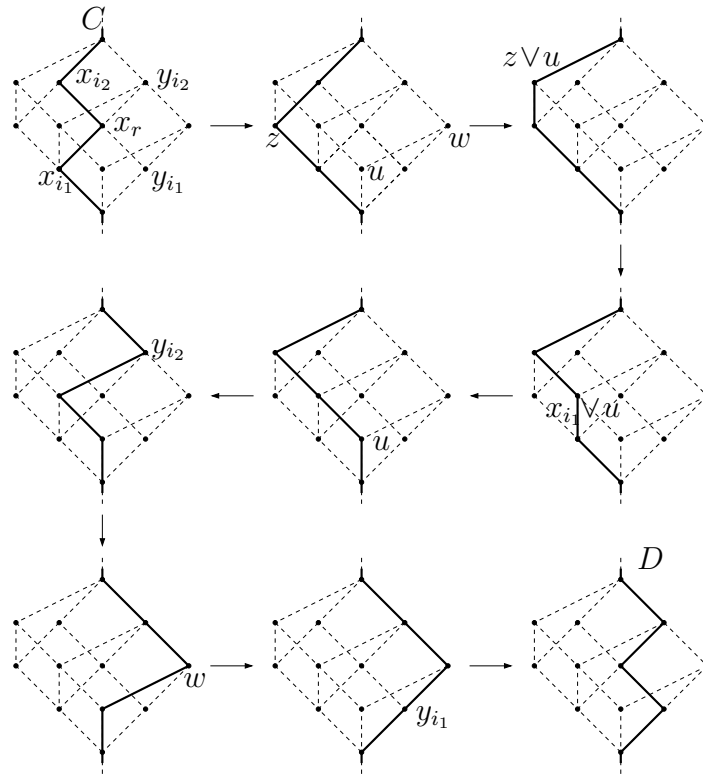
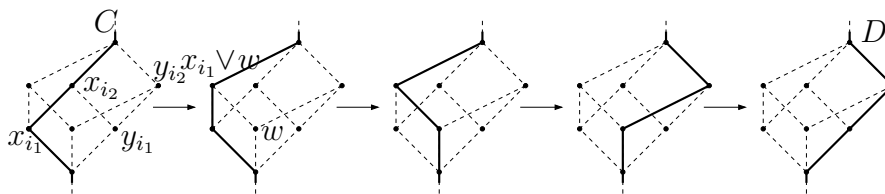


FIGURE 5.5. Path from C to D , Case 5

REFERENCES

- [1] Peter Abramenko and Kenneth S. Brown. *Buildings*, volume 248 of *Graduate Texts in Mathematics*. Springer, New York, 2008.

FIGURE 5.6. Path from C to D , Case 6

- [2] M. L. Balinski. On the graph structure of convex polyhedra in n -space. *Pacific J. Math.*, 11:431–434, 1961.
- [3] Reinhard Diestel. *Graph theory, 3rd Ed.*, volume 173 of *Graduate Texts in Mathematics*. Springer-Verlag, Berlin, 2005.
- [4] Gui Zhen Liu. Proof of a conjecture on matroid base graphs. *Sci. China Ser. A*, 33(11):1329–1337, 1990.
- [5] Mark Ronan. *Lectures on buildings*, volume 7 of *Perspectives in Mathematics*. Academic Press Inc., Boston, MA, 1989.
- [6] Rudolf Scharlau. Buildings. In *Handbook of incidence geometry* (ed. F. Buekenhout), pages 477–645. North-Holland, Amsterdam, 1995.
- [7] Richard P. Stanley. *Combinatorics and commutative algebra*, volume 41 of *Progress in Mathematics*. Birkhäuser Boston Inc., Boston, MA, second edition, 1996.
- [8] Richard P. Stanley. *Enumerative combinatorics. Vol. 1*, volume 49 of *Cambridge Studies in Advanced Mathematics*. Cambridge University Press, Cambridge, 1997.
- [9] Jacques Tits. *Buildings of spherical type and finite BN-pairs*. Lecture Notes in Mathematics, Vol. 386. Springer-Verlag, Berlin, 1974.

ROYAL INSTITUTE OF TECHNOLOGY, DEPARTMENT OF MATHEMATICS, S-100
44 STOCKHOLM, SWEDEN
E-mail address: `bjorner@math.kth.se`

ROYAL INSTITUTE OF TECHNOLOGY, DEPARTMENT OF MATHEMATICS, S-100
44 STOCKHOLM, SWEDEN
E-mail address: `vorwerk@math.kth.se`